



AUTOVUE DR-41 & DR-42

2CH UHD/QHD

High-res Front & Rear Dash Cam

Quickstart Guide

English

Points To Note

1. Do not disassemble or attempt to repair the product. Doing so would constitute a breach of the user agreement and may result in the warranty becoming invalid.
2. To prevent accidents, do not operate the product while driving. The dash cam should not obstruct the view of the driver or any of the vehicle's primary controls, such as the steering wheel or dashboard.
3. Turn off the product prior to exposing it to direct sunlight for an extended period of time to avoid malfunction.
4. There may be some delay in real-time recording, monitoring, and playback of recorded videos depending on the specifications of the mobile device.
5. Do not connect the dash cam to a continuous power supply on your own, as this could result in malfunction. The method of connection will depend on the power source of your vehicle. To ensure proper installation, seek the assistance of a professional technician.
6. It is recommended to download the videos via the Auto Sight Pro Mobile App regularly to prevent older footages from being overwritten during loop recording.

Set-up & Instructional Video

To view the set-up video on the AutoVue website, please visit <https://www.autovue.com.au/faqs> or scan the QR code.



About The Product



Product Specifications

Brand	AUTOVUE
Model	DR-41 & DR-42
Image sensor	Front camera: Sony IMX678 (STARVIS 2) Rear camera: Sony IMX335 (STARVIS)
Resolution	Front camera: 3840*2160P 30fps Front camera: 2560*1440P 60fps Rear camera: 2560*1440P 30fps
Viewing angle	Front camera: 150° (under 60 FPS the angle is 110 degree) Rear camera: 135°
HDR	Available
Wi-Fi	5.8GHz ultra-high-speed transmission
Power supply	DC12-24V 1.5A
Memory card	Standard-equipped with 128GB micro SD; supports up to 1TB
Operating temperature range	-20°C~70°C
High-temperature protection	75°C
Low-voltage protection	Available
Recording modes	Driving mode, Parking mode (Impact), Parking mode (Time-lapse)
International certifications	FCC, CE, RoHS, UKCA

Product Buttons And Indicators

Item	Operation & status indicator
Power button	Short press to turn on - "Start Recording" signal comes on
	While recording, short press to pause - "Stop Recording" signal comes on Short press again to resume recording - "Start Recording" signal comes on
	Long press (3 secs) to turn off - "Stop Recording" signal comes on, equipment switches off
Audio recording button	Short press to start/stop audio recording - "beep" sounds
	Long press 10 secs to restore factory settings
Video recording indicator	Red light on: Currently recording video Red light flashes: Video recording stopped
Audio recording indicator	White light on: Currently recording audio
GPS indicator	Blue light on: GPS signal normal Blue light flashes: Searching for GPS signal
Signal	White signal light flashing slowly: Driving mode on White signal light blinking quickly: Parking mode on
	Signal light can be turned on/off via mobile application settings

Installing The “Auto Sight pro” Mobile Application

Supports Android and iOS platforms

To download:

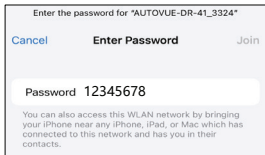
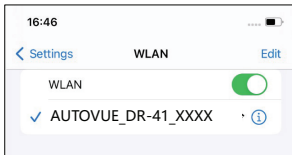
- Search for “Auto Sight Pro” on Google Play or App Store,
- or Scan the appropriate QR code below



iOS & Android

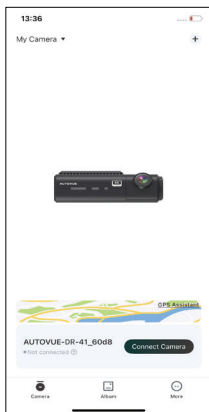
Note: During first use, permission needs to be given to access items such as location and saving

Connecting To Mobile Device

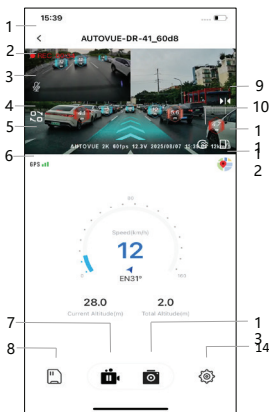


1. Turn on Wi-Fi on mobile
2. Select “AUTOVUE_DR-41_xxxx” or “AUTOVUE_DR-42_xxxx” from list
3. Enter passcode “12345678” and tap on “join”

Auto Sight pro Mobile Application



Mobile Application Home Screen

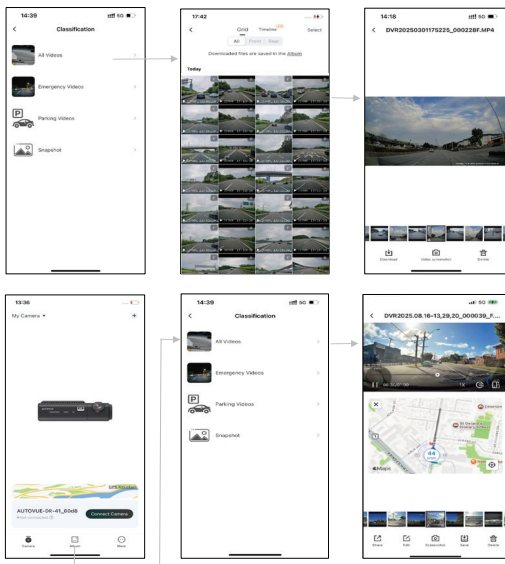


Real-time Feed

Real-time Feed

1. Return to "Home"
2. Real-time rear-camera view
3. Audio recording on/off
4. Switch between front & rear cameras
5. Real-time front-camera view
6. GPS
7. Stop/start recording
8. Camera Files
9. Image mirroring
10. VIP watermark on/off
11. Switch to full screen
12. map
13. Take photo
14. Camera Setting

Files



1. All videos refer to videos stored on the memory card
2. Emergency video refers to the emergency video stored in the memory card
3. The parking monitoring video is the parking monitoring video stored in the memory card
4. The Snapshot refers to the image stored in the memory card
5. Device files can be downloaded and saved locally to the mobile phone gallery or deleted
6. When device is connected to GPS receiver, local video playback on mobile device will display speed and map
7. To access high-res video source files, download them onto a mobile device or copy them onto a computer from memory card. Files sent via mobile app may be compressed

Files



Timeline function

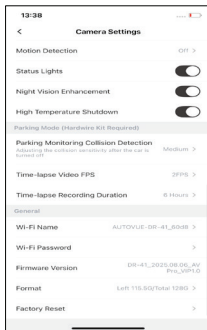
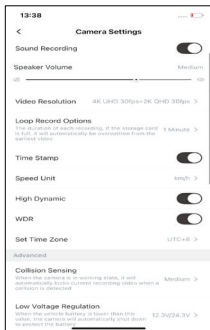


License plate recognition function

Function introduction:

1. Timeline function: In the playback folder directory, click the Timeline menu, enter the timeline to view, slide to the required date and time, and you can quickly select the corresponding video file for playback and download.
2. License plate recognition function: select the corresponding video to download, save it to the local album, and then import AR data. After loading, the license plate recognition magnification, vehicle speed, vehicle distance and other data can be displayed on the screen.

Settings



Gentle reminder:

1. Change password after connecting device for the first time.
2. Long press audio recording button for 10 secs when device is switched on to reset password to factory default
3. "Collision Sensing": Refers to that in driving mode, recorded videos will be saved under "incident recording" when the sensor detects an impact stronger than the pre-set threshold.
4. "Parking Monitoring Collision Detection": Automatically powers on and records 30-second incident videos upon detecting external impact stronger than the pre-set threshold when the car is switched off and parked.
5. "Time-lapse Video FPS ": Records a continuous video with the pre-set frame rate and duration when the car is switched off and parked.
6. When selecting the "Parking mode" options:
 - a. Ensure there is a continuous power supply
 - b. Note that car battery will be consumed
7. Format memory card regularly to keep it in optimal status for recording & saving.
8. Setting will be immediately saved upon modification.

Warranty

The product comes with a limited warranty that covers defects in materials and workmanship of the product for a period of ten(10) years from the date of purchase. This warranty applies only to the original owner and is non-transferable.

Item excluded :

1. Products purchased from a source other than AUTOVUE or its authorised resellers.
2. Normal wear and tear, abuse, neglect of maintenance, accidents, modifications, alterations or malfunctions arising from unauthorised repairs.
3. Product use in combination with elements that are not provided or accredited by AUTOVUE, or any resulting damage to the product or its components.
4. AUTOVUE will not be liable for any property or commercial loss and/or indirect or consequential loss resulting from accidents or natural disasters. In addition, AUTOVUE will not be held responsible for any data loss or damage, product damage or bodily harm caused by any reason.

Disclaimer – AutoVue Assistance Features

AutoVue features—including but not limited to **Number Plate Recognition, Distance Control, AI-assisted alerts, visual or audio warnings, lane-related indications, speed prompts, event detection, and any other driver-assistance technologies**—are designed solely to **support** safer driving practices.

These systems are **not** substitutes for the driver's own judgement, attention, or adherence to Australian road rules.

These features may not operate accurately in all situations, including poor lighting, adverse weather, glare, road debris, obstructions, unclear number plates, unexpected road events, or when the camera's view is compromised. **The driver must maintain full control of the vehicle at all times** and is responsible for monitoring surroundings and making safe driving decisions.

AutoVue is not responsible or liable for any loss, damage, accident, infringement, or incident resulting from reliance on these assistance features, except where such liability cannot be excluded under the **Australian Consumer Law (ACL)**. Nothing in this disclaimer limits or modifies any consumer guarantees under the ACL.

Packing List

When opening product package, please check that all of the following items are included:

- Front camera (main unit)
- Rear camera
- Power cable
- Rear camera connecting cable
- 128GB memory card (pre-installed) & SD card adapter
- Quickstart Guide
- Camera lens cleaning cloth
- GPS receiver

Contact

Tel: 1300 826 801

Mon-Fri: 9am-5pm AEST

Email: info@autovue.com.au

Mail: PO Box 125, Port Melbourne VIC 3207